

春兰244FM发动机

Aktuelle Preise erfahren sie auf www.motorroller.de

维修图册使用方法

INSTRUCTION FOR USER OF SERVICE PICTURES

本图册汇编 244FM 汽油发动机修理用所有配件

This service pictures is compile all service parts for 244FM gasoline engine.

I. 零部件定货方法

I. How to order parts

1. 所需资料

1. Information required

更换零件的定货要有零件的代号、名称和数量。

Replacement parts orders must contain the part number, the part name and the quantity.

2. 修订

2. Revisions

当本维修图册有修订或补充时,恕不通知。

When modification or additions to this service pictures are made, we'll make such super-sentence without notice.

II. 维修图册的读法

II. How to read this service pictures

1. 所有尺寸均用毫米(mm)表示。

1. All dimensions are given in millimetres (mm).

2. 总成

2. Assemblies

总成分解图中虚线框起的部分可供应完整的套件(亦可供应个别的零件)。

Sections framed with broken lines in the exploded view drawings are available as complete assemblies (Their individual parts can also be obtained.

一九九六年八月

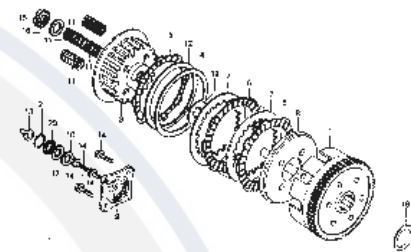
AUG., 1996

春兰动力制造有限公司

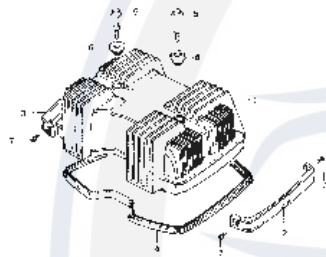
ChunLan Power Manufacturing CO., LTD.

发动机

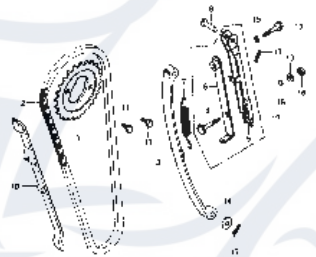
ENGINE GROUP



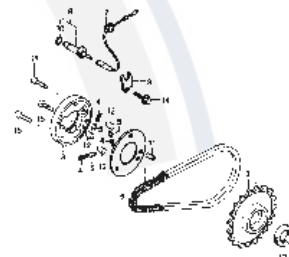
P9



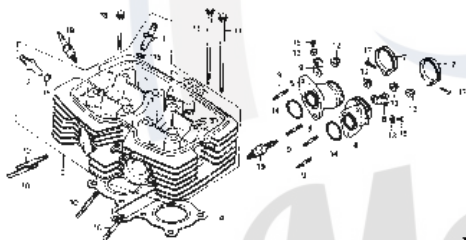
P1



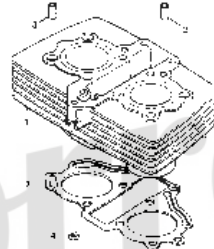
P6



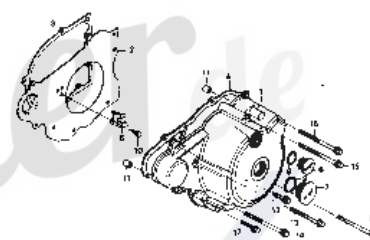
P11



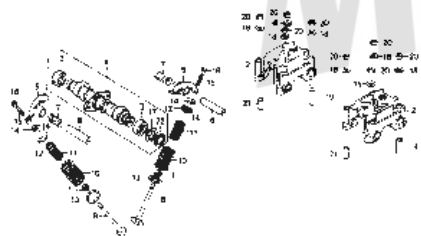
P2



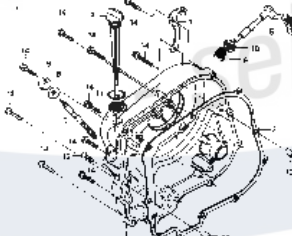
P7



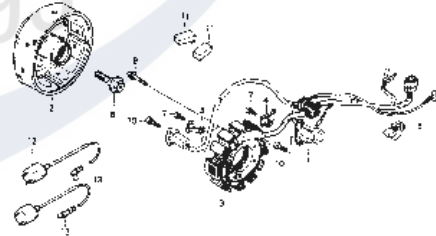
P12



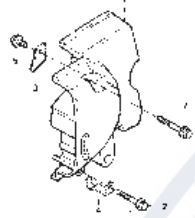
P4



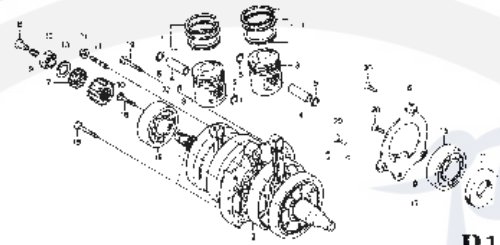
P8



P13



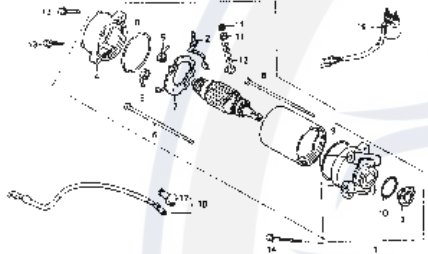
P14



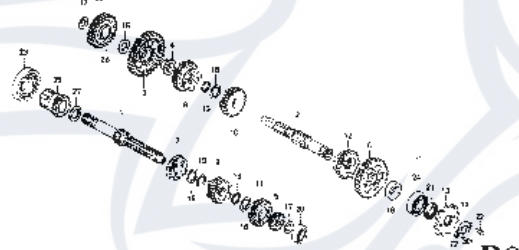
P18



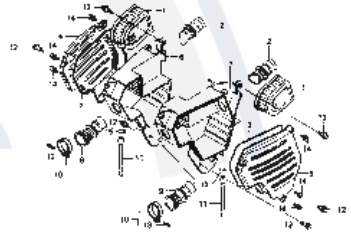
P25



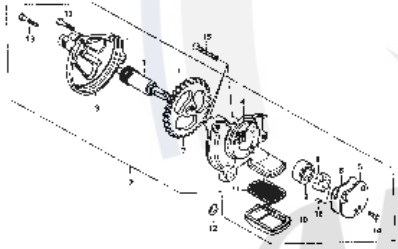
P15



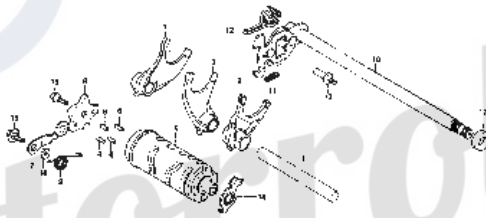
P20



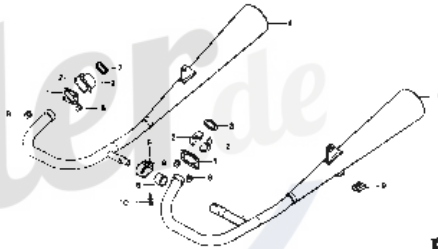
P26



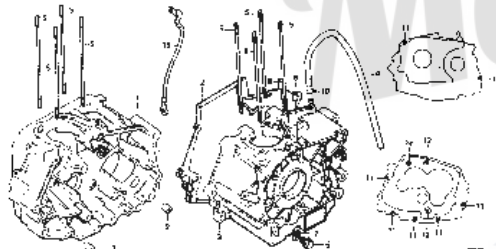
P16



P22



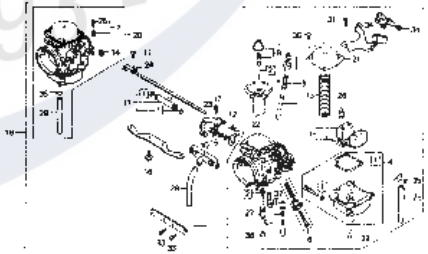
P27



P17

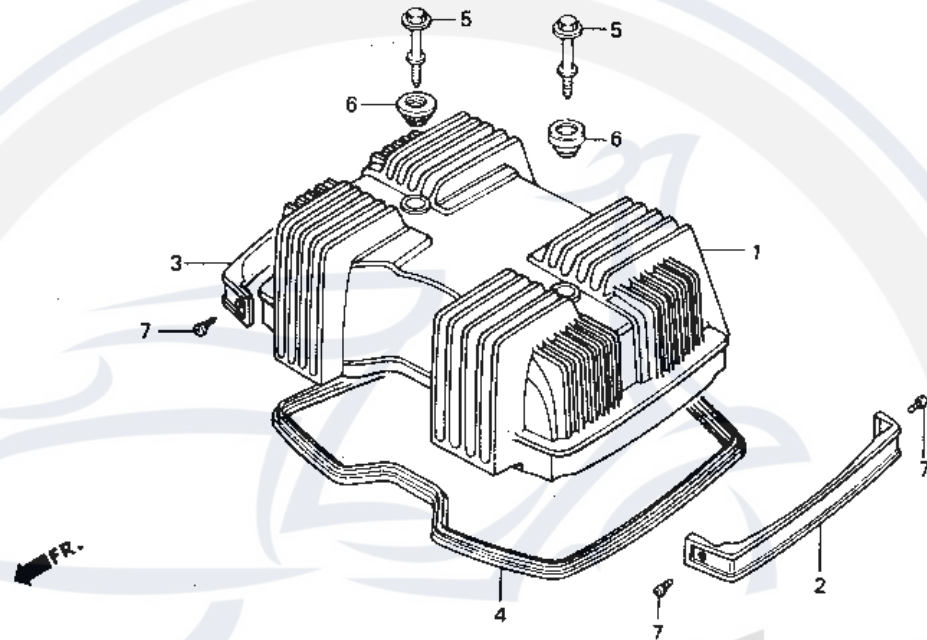


P24



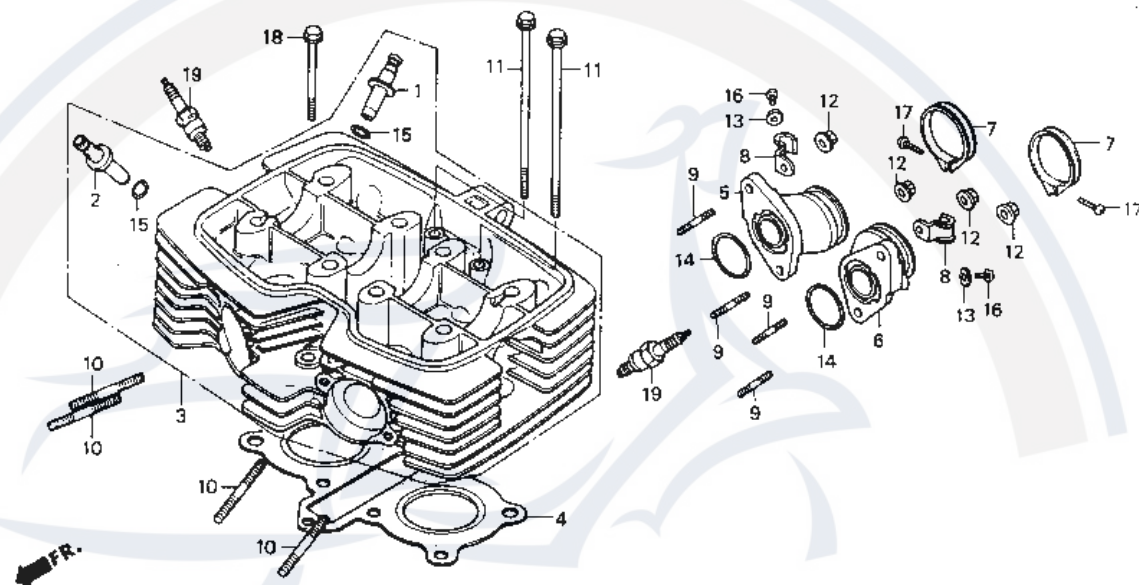
P28

气缸盖罩
Cylinder head cover



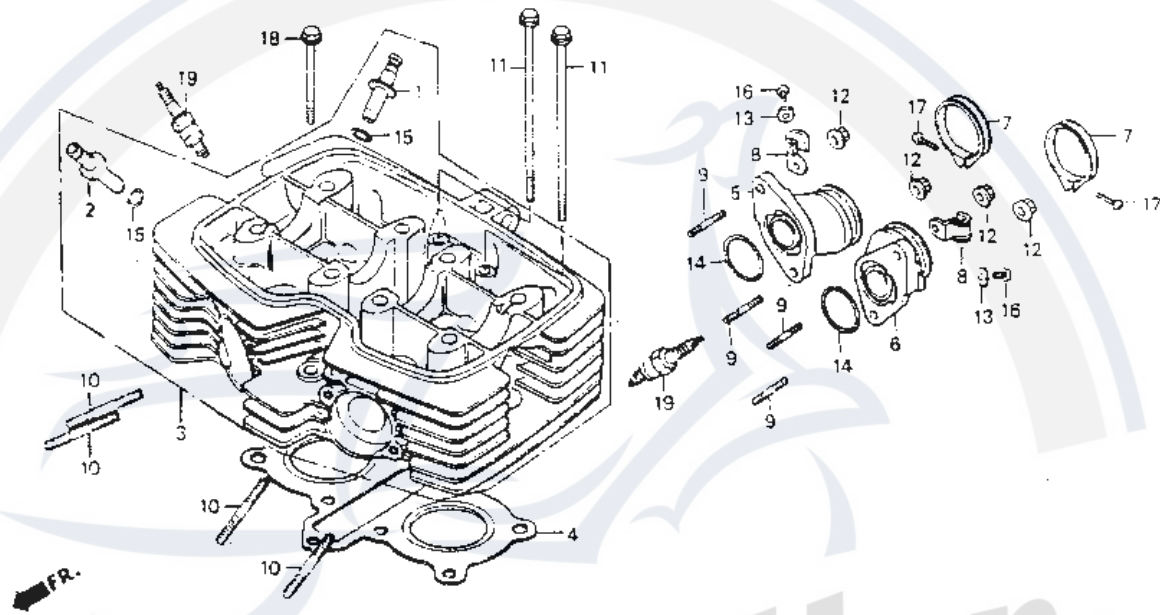
序号 No.	代号 Part No.	名称	Description	每台件数 Repd.
1	244FM.01.05-01	气缸盖罩	COVER, CYLINDER HEAD	1
2	244FM.01.05-02	气缸盖罩左装饰板	EMBLEM, L. HEAD COVER	1
3	244FM.01.05-04	气缸盖罩右装饰板	EMBLEM, R. HEAD COVER	1
4	244FM.01.05-03	密封胶圈	PACKING, HEAD COVER	1
5	244FM.01.07-01	气缸盖罩固定螺钉	BOLT, SPECIAL, 6×38	2
6	244FM.01.07-03	橡胶圈	RUBBER, MOUNTING	2
7	GB6560	螺钉	SCREW, TAPPING, 4×10	4

气缸盖
Cylinder head



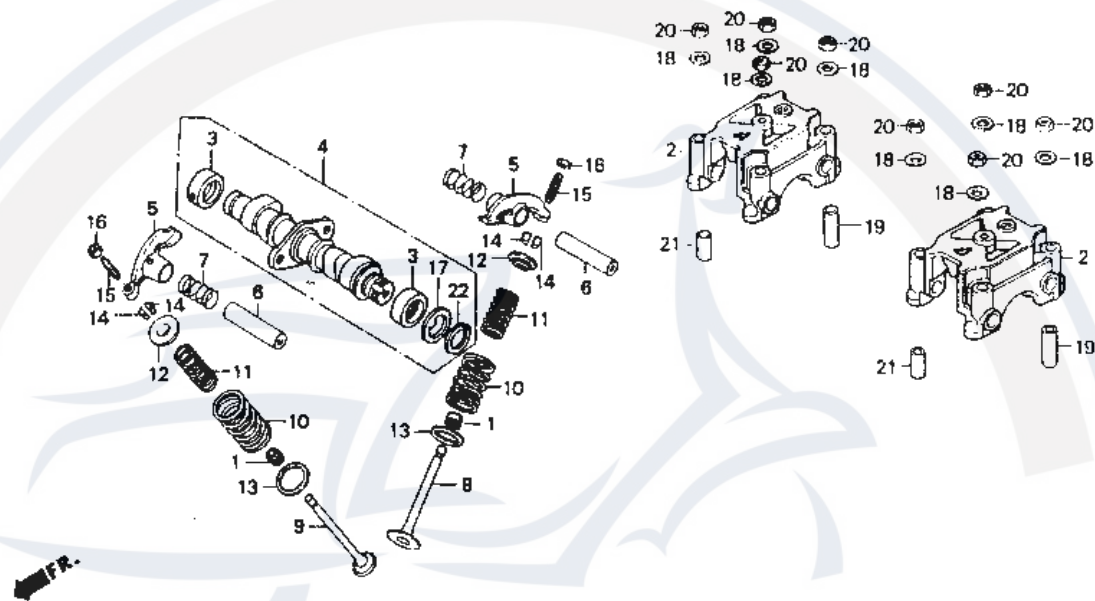
序号 No.	代号 Part No.	名称	Description	每台件数 Repd.
1	244FM.01.01.01-06	进气门导管	GUIDE, IN. VALVE	2
2	244FM.01.01.01 02	排气门导管	GUIDE, EX. VALVE	2
3	244FM.01.01.01	气缸盖	HEAD COMP., CYLINDER	1
4	244FM.01-01A	气缸垫	GASKET, CLINDER HEAD	1
5	244FM.01.04.01	右缸进气管	INSULATOR, R. CARBURETTOR	1
6	244FM.01.02.01	左缸进气管	INSULATOR, L. CARBURETTOR	1
7	244FM.01.03	卡箍组件	BAND, INSULATOR	2
8	244FM.01 02	线卡	CLIP, HIGH TENSION CORD	2
9	244FM.01.01-10	双头螺栓(一)	BOLT, STUD	4
10	244FM.01.01-08	双头螺栓(二)	BOLT, STUD	4
11	244FM.03-01	螺栓1	BOLT, FLANGE, 6×135	2
12	244FM.01.01 09	盖形螺母	NUT, FLANGE, 6MM	4
13	GB97.1	垫圈	WASHER, 5MM	2
14	GB3452.1	O形圈25.8×2.65	O-RING, 25.8×2.65	2
15	244FM.01.01.01 03	O形圈	O-RING, 10×1.6	4
16	GB818	螺钉M5×6	SCREW, PAN, 5×6	2

气缸盖
Cylinder head



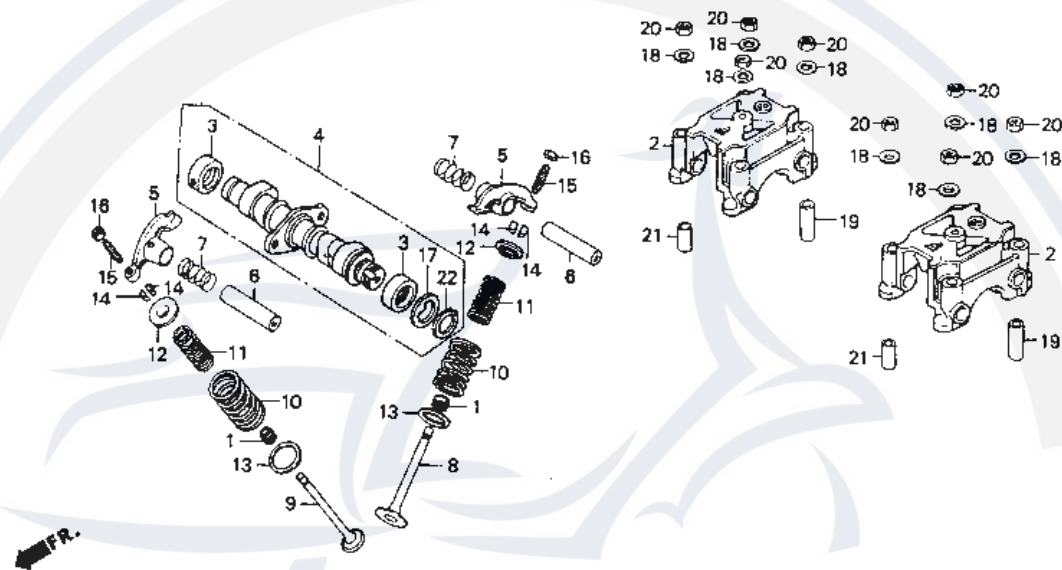
序号 No.	代号 Part No.	名称	Description	每台件数 Repd.
17	GB818	螺钉 M5×20	SCREW, PAN, 5×20	2
18	244FM.03-10	螺栓 2	BOLT, FLANGE, 6×65	1
19	T1137	火花塞	PLUG, SPARK	2
	CR7HSA(NGK)	火花塞	PLUG, SPARK	2
	U22FSR-U(ND)	火花塞	PLUG, SPARK	2

凸轮轴·气门
Camshaft·valve



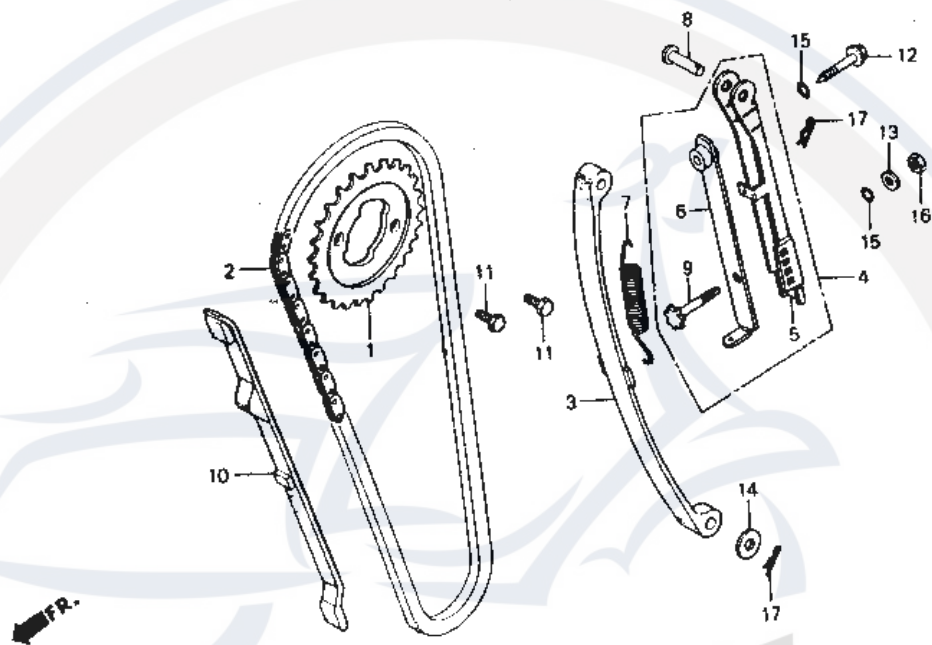
序号 No.	代号 Part No.	名称	Description	每台件数 Repd.
1	244FM.01.01.02	气门导管油封	SEAL, VALVE STEM (ARAI)	4
2	244FM.01.06-01	摇臂座	HOLDER, CAMSHAFT	2
3	244FM.01.08.01	凸轮轴衬套	BUSH COMP., CAMSHAFT	2
4	244FM.01.08	凸轮轴	CAMSHAFT COMP	1
5	244FM.01.06-04	气门摇臂	ARM, VALVE ROCKER	4
6	244FM.01.06-07	摇臂轴	SHAFT, VALVE ROCKER ARM	4
7	244FM.01.06-06	摇臂弹簧	SPRING, VALVE ROCKER ARM SIDE	4
8	244FM.01.01-06	进气门	VALVE, IN	2
-9	244FM.01.01-05	排气门	VALVE, EX	2
10	244FM.01.01-03	气门外弹簧	SPRING, VALVE OUTER	4
11	244FM.01.01-04	气门内弹簧	SPRING, VALVE INNER	4
12	244FM.01.01-01	气门弹簧座	RETAINER, VALVE SPRING	4
13	244FM.01.01-07	气门外弹簧垫	SEAT, VALVE SPRING OUTER	4
14	244FM.01.01-02	气门锁夹	COTTER, VALVE (SANKO)	8
15	244FM.01.06-02	气门间隙调整螺钉	SCREW, TAPPET ADJUSTING	4
16	244FM.01.06-03	气门间隙调整螺母	NUT, TAPPET ADJUSTING	4

凸轮轴·气门
Camshaft·valve



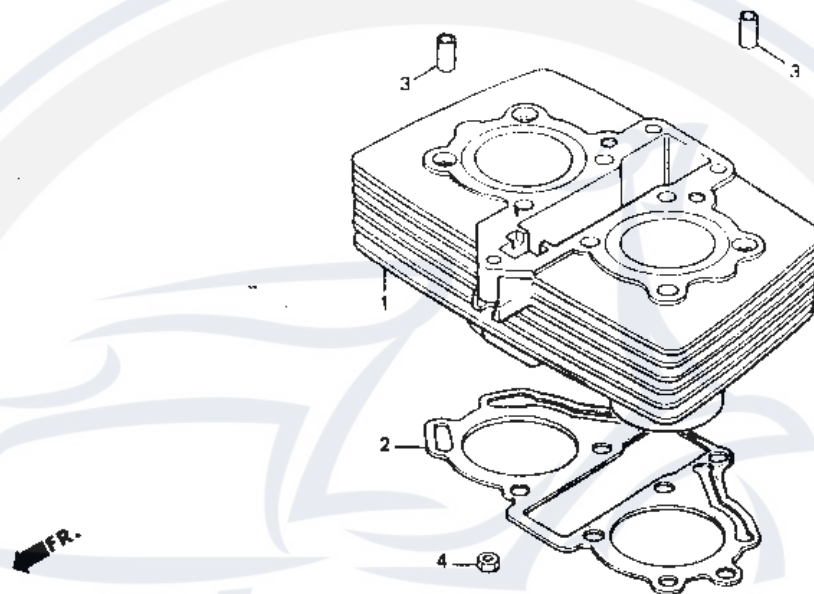
序号 No.	代号 Part No.	名称	Description	每台件数 Repd.
17	244FM. 01. 08--04	止动垫圈	WASHER, THRUST, 20MM	1
18	244FM. 03-05	垫圈	WASHER, 8MM	8
19	244FM. 01. 06--05	定位销	PIN, DOWEL, 10×28	2
20	GB6170	螺母	NUT, HEX., 8MM	8
21	244FM. 01. 06-08	定位销	PIN, DOWEL, 10×16	2
22	QSTW-20	挡圈	CIRCLIP, EXTERNAL, 20MM	1

正时链条张紧机构
Cam chain Tensioner



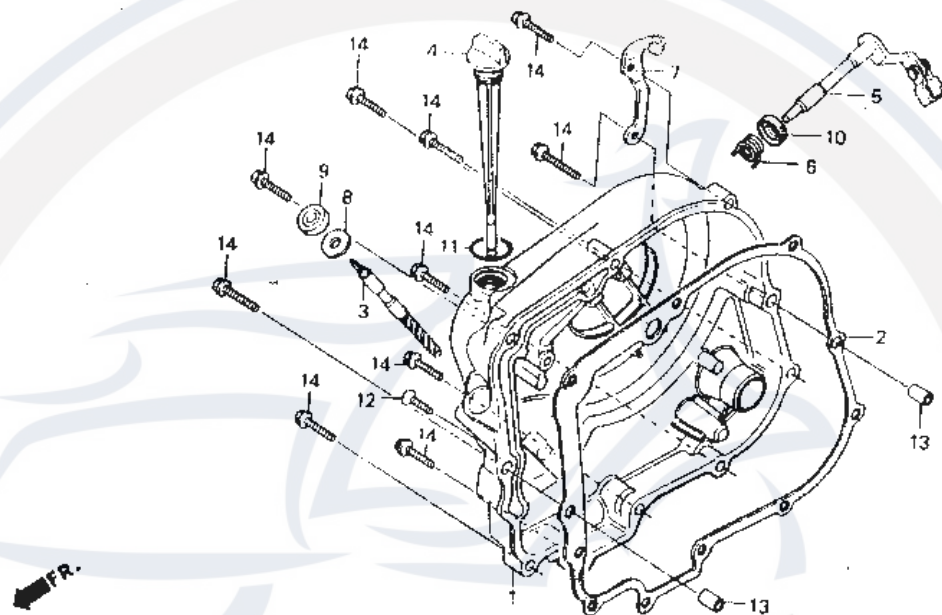
序号 No.	代号 Part No.	名称	Description	每台件数 Repd.
1	244FM.01.08-03	正时链轮	SPROCKET, CAM(38T)	1
2	244FM.05.01	正时链	CHAIN, CAM	1
3	244FM.05.03	张紧机构压带	TENSIONER, CAM CHAIN	1
4	244FM.05.02	张紧机构调节架	BASE ASSY., CAM CHAIN TENSIONER	1
5	244FM.05.02-01	调节架	BASE, CAM CHAIN TENSIONER	1
6	244FM.05.02.01	调节杆	PLATE COPM.B, CAM CHAIN TENSIONER	1
7	244FM.05.02-03	拉伸弹簧	SPRING, CAM CHAIN TENSIONER	1
8	GB882	销轴6×20B	PIN, CAM CHAIN TENSIONER	1
9	244FM.05.02-02	调节轮	ADJUSTER, CAM CHAIN TENSIONER	1
10	244FM.05.04	张紧机构导板	GUIDE, CAM CHAIN (HOKUSHIN)	1
11	244FM.01.08-02	螺栓	BOLT, HEX.KNOCK, 7×12	2
12	GB5787	螺栓 M6×25	BOLT, SPECIAL, 6MM	1
13	GB97.1	垫圈6	WASHER, SEALING, 6MM	1
14	244FM.04-09	垫圈	WASHER, SPARK ADVANCER SETTING	1
15	GB3452.1	O形圈6×1.8	O-RING, 6×1.8	3
16	GB6170	螺母	NUT, HEX., 6MM	1
17	244FM.04-08	弹性销	PIN, LOCK, 6MM	2

气缸体
Cylinder



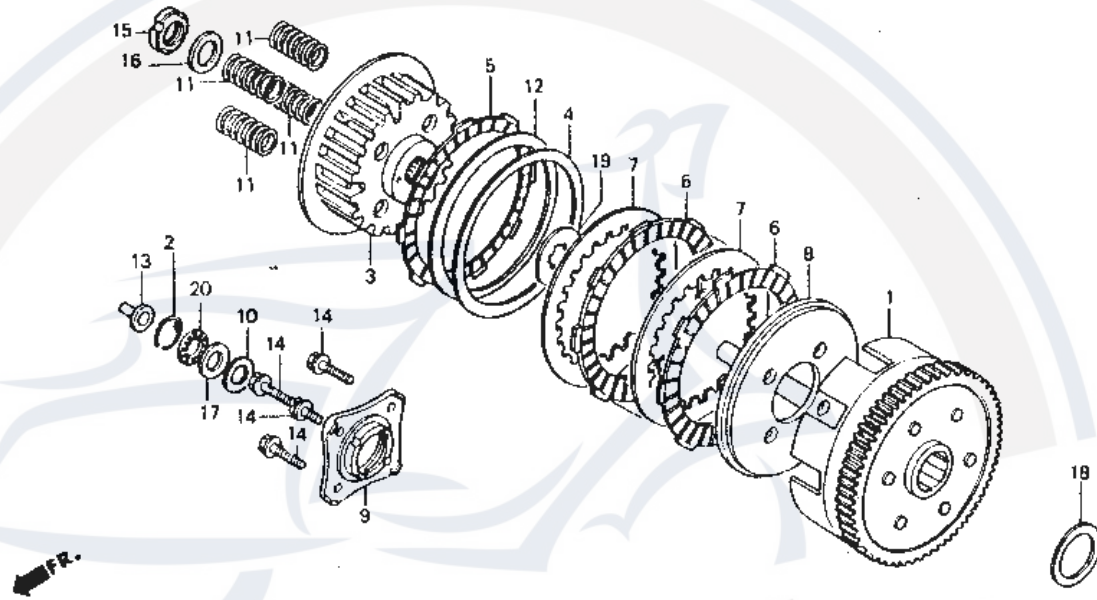
序号 No.	代号 Part No.	名称	Description	每台件数 Repd.
1	244FM.03.04	气缸体	CYLINDER COMP	1
2	244FM.03-08	缸体垫片	GASKET, CYLINDER	1
3	244FM.03-09	定位销	PIN, DOWEL, 10×16	2
4	GB6170	螺母 M6	NUT, HEX., 6MM	1

右曲轴箱盖
Right crankcase cover



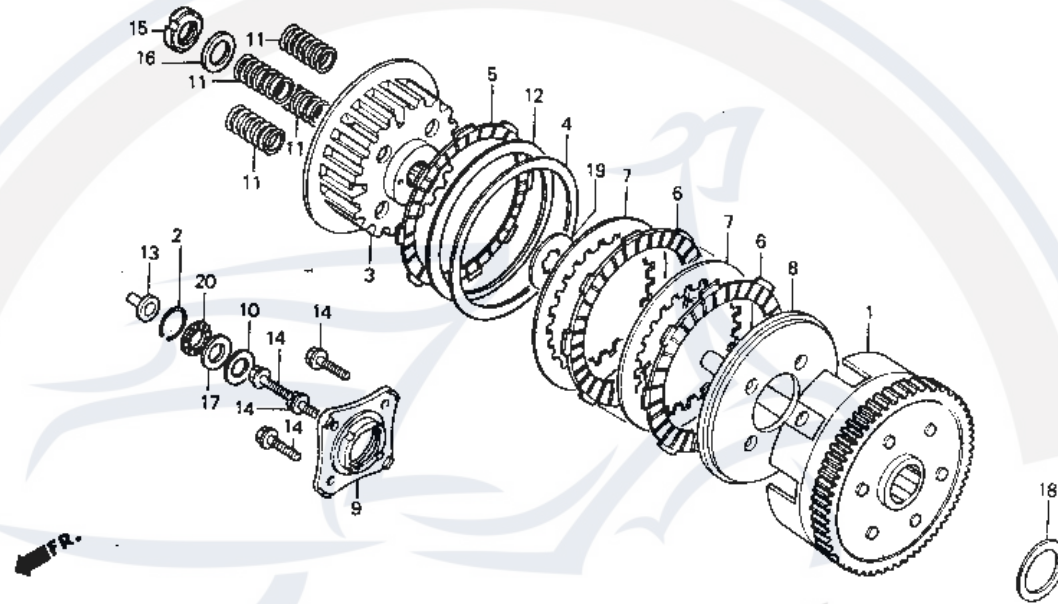
序号 No.	代号 Part No.	名称	Description	每台件数 Repd.
1	244FM.03.05-01	右曲轴箱盖	COVER, R.CRANKCASE	1
2	244FM.03-12	右曲轴箱盖垫片	GASKET, R.CRANKCASE COVER	1
3	244FM.03.05-05	测速齿轮	GEAR, TACHOMETER(6T)	1
4	244FM.03.05-04	油标尺	GAUGE, OIL LEVEL	1
5	244FM.03.05.01	离合器手柄	LEVER COMP., CLUTCH	1
6	244FM.03.05-03	弹簧	SPRING, CLUTCH LEVER	1
7	244FM.03.05-02	线卡(二)	RECEIVER, CLUTCH CABLE	1
8	244FM.03.05.06	垫圈	WASHER, THRUST, 6.7MM	1
9	244FM.03.05.04	油封	OIL SEAL, 6.5×14.5×7(ARAI)	1
10	244FM.03.05.02	油封	OIL SEAL, 12×18×5(ARAI)	1
11	ZBJ22002	O形圈 M18-C	O-RING, 18×3	1
12	GB820	螺钉 M5×25	SCREW, OVAL, 5×25	1
13	244FM.03-09	定位销	PIN, DOWEL, 8×14	2
14	244FM.03.06-02	螺栓(1)	BOLT, FLANGE, 6×40	10

离合器
Clutch



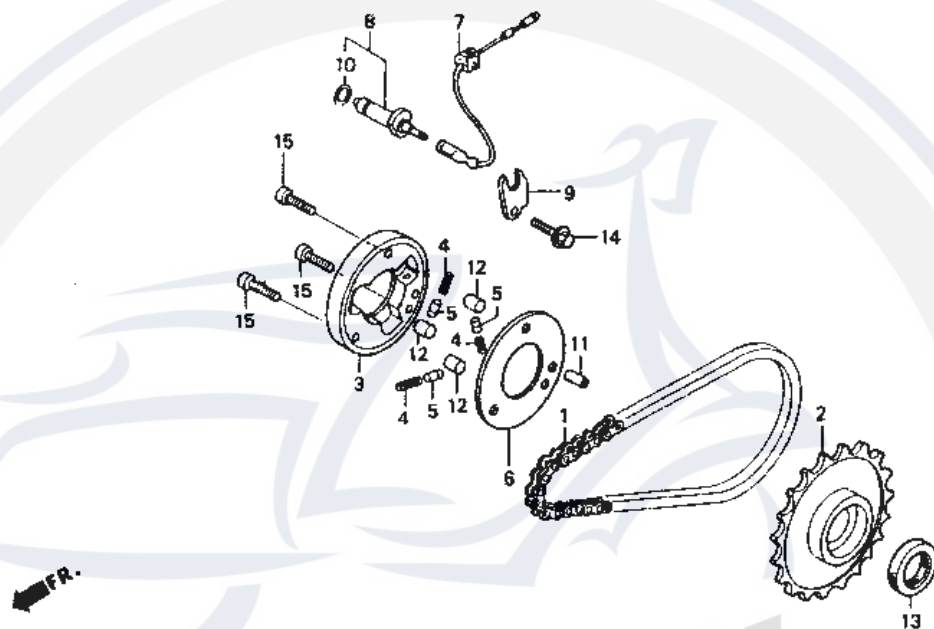
序号 No.	代号 Part No.	名称	Description	每台件数 Repd.
1	224FM. 07. 01	离合器主动鼓	OUTER COMP., CLUTCH	1
2	244FM. 07. 03-02	孔用钢丝挡圈	CLIP. NEEDLE THRUST BEARING, 12MM	1
3	244FM. 07. 02	离合器从动鼓	CENTER, CLUTCH	1
4	244FM. 07-05	离合器垫圈	SEAT, JUDDER SPRING	1
5	244FM. 07-04	摩擦片〈2〉	DISK, CLUTCH FRICTION	1
6	244FM. 07-02	摩擦片〈1〉	DISK, CLUTCH FRICTION	4
7	244FM. 07-03	离合器齿盘	PLATE, CLUTCH	4
8	244FM. 07-10	离合器从动鼓座	PLATE, CLUTCH PRESSURE	1
9	244FM. 07-08	弹簧座	PLATE, CLUTCH LIFTER	1
10	244FM. 07. 03-01	轴承座	COLLAR, CLUTCH LIFTER	1
11	244FM. 07-09	离合器弹簧	SPRING, CLUTCH	4
12	244FM. 07. 06	碟形垫圈	SPRING, JUDDER	1
13	244FM. 07-07	推杆	PIN, CLUTCH LIFTER	1
14	GB5787	螺栓 M6×25	BOLT, SPECIAL FLANGE, 6×25	4
15	244FM. 07-11	锁紧螺母	NUT, LOCK, 16MM	1
16	244FM. 07-12	垫圈	WASHER, 16MM	1

离合器
Clutch



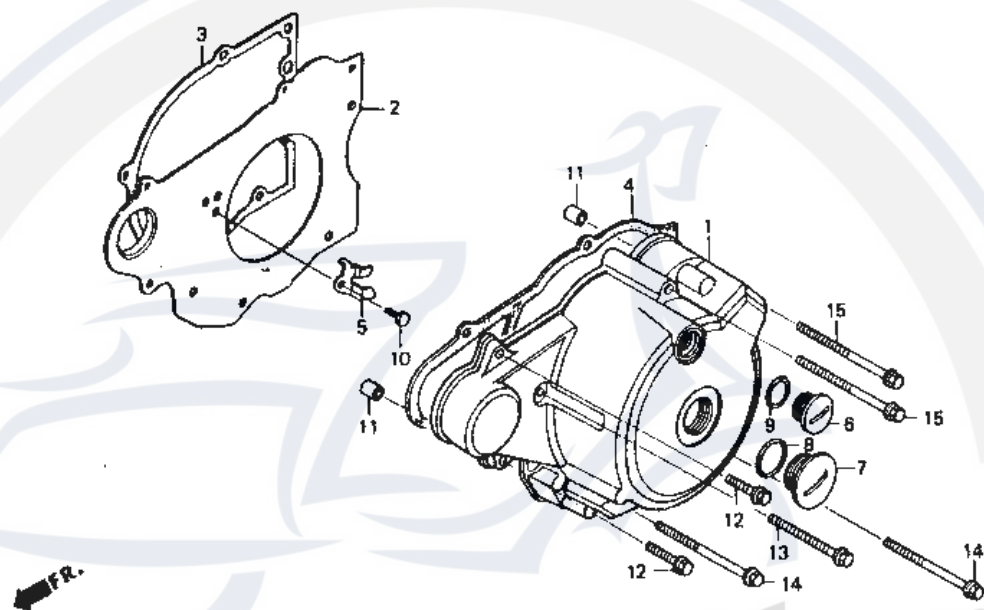
序号 No.	代号 Part No.	名称	Description	每台件数 Repd.
17	244FM.07.03-03	推力滚针轴承挡片	WASHER, THRUST, 12MM	1
18	244FM.08-20	垫圈	WASHER, THRUST, 30MM	1
19	244FM.07-01	花键垫圈	WASHER B, SPLINE, 20MM	1
20	GB4605	滚针轴承889101	BEARING, NEEDLE, 12MM	1

超越离合器
Starting clutch



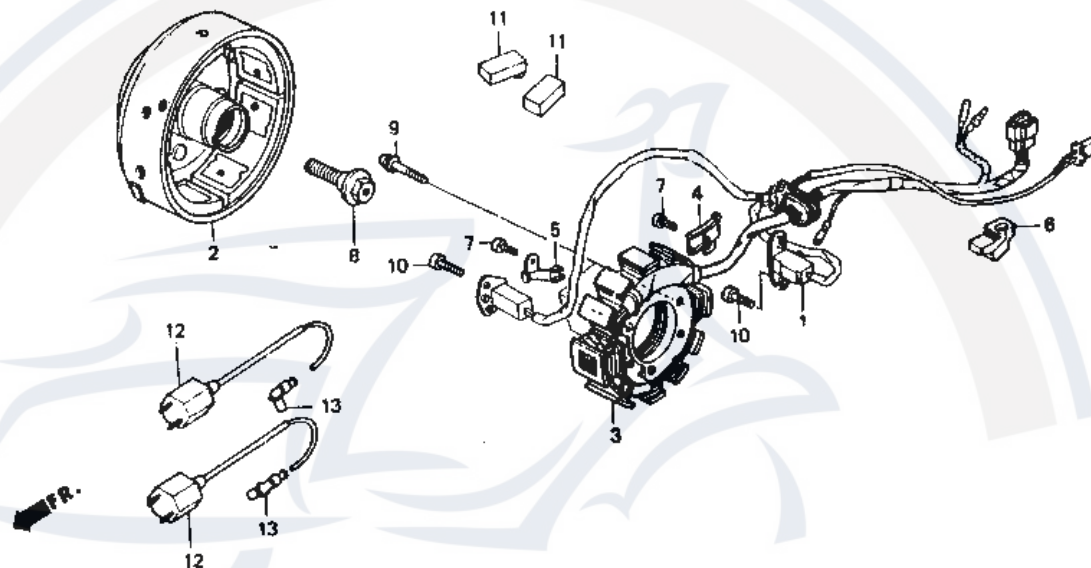
序号 No.	代号 Part No.	名称	Description	每台件数 Repd.
1	244FM.04.04	起动链	CHAIN, STARTING	1
2	244FM.04.03.01	起动大链轮	SPROCKET COMP., STARTING(38T)	1
3	244FM.10.03.01	星轮	OUTER COMP., STARTING CLUTCH	1
4	244FM.10.03--01	弹簧	SPRING, STARTING CLUTCH ROLLER	3
5	244FM.10.03--02	顶销	CAP, STARTING CLUTCH ROLLER SPRING	3
6	244FM.10.03--04	盖板	PLATE, STARTING CLUTCH SIDE	1
7	244FM.03.07.06	空档接触器引线	SUB CORD A	1
8	244FM.03.07.07	空档接触器	CONTACT ASSY., NEUTRAL SWITCH	1
9	244FM.03.07--09	固定卡片	PLATE, NEUTRAL SWITCH SETTING	1
10	GB3452.1	O形圈6.9×1.8	O-RING, 6.9×1.8	1
11	GB119	销B6×14	PIN, KNOCK, B6×14	1
12	244FM.10.03--03	滚柱	ROLLER, 10.2×9.5	3
13	244FM.04.03.02	油封	OIL SEAL, 22×31×5	1
14	GB5787	螺栓 M6×12	BOLT, FLANGE, 6×12	1
15	GB70	螺钉 M6×16	BOLT, SOCKET, 6×16	3

左曲轴箱盖
Left crankcase cover



序号 No.	代号 Part No.	名称	Description	每台件数 Repd.
1	244FM.03.01-01	左曲轴箱盖	COVER, L. CRANKCASE	1
2	244FM.03.03.01	曲轴箱左侧盖隔板	SPACER COMP., L. SIDE	1
3	244FM.03-07	曲轴箱左侧盖隔板右垫片	GASKET, L. CRANKCASE COVER	1
4	244FM.03-06	曲轴箱左侧盖隔板左垫片	GASKET, L. CRANKCASE COVER	1
5	244FM.03.03-02	限位片	PLATE, STARTING, SPROCKET SETTING	1
6	244FM.03.01-03	螺塞(一)	CAP, A. C. GENERATOR	1
7	244FM.03.01-04	螺塞(二)	CAP, 30MM	1
8	244FM.03.01-07	O形圈	O-RING, 27.4×2.4	1
9	244FM.03.01-06	O形圈	O-RING, 13.8×2.5	1
10	GB5783	螺栓6×10	BOLT, HEX., 6×10	1
11	244FM.03-09	定位销	PIN, DOWEL, 8×14	2
12	244FM.03.03-01	螺栓(4)	BOLT, FLANGE, 6×20	2
13	244FM.03.06-02	螺栓(1)	BOLT, FLANGE, 6×40	1
14	244FM.03.07-12	螺栓(2)	BOLT, FLANGE, 6×50	2
15	244FM.03.07-07	螺栓(3)	BOLT, FLANGE, 6×65	2

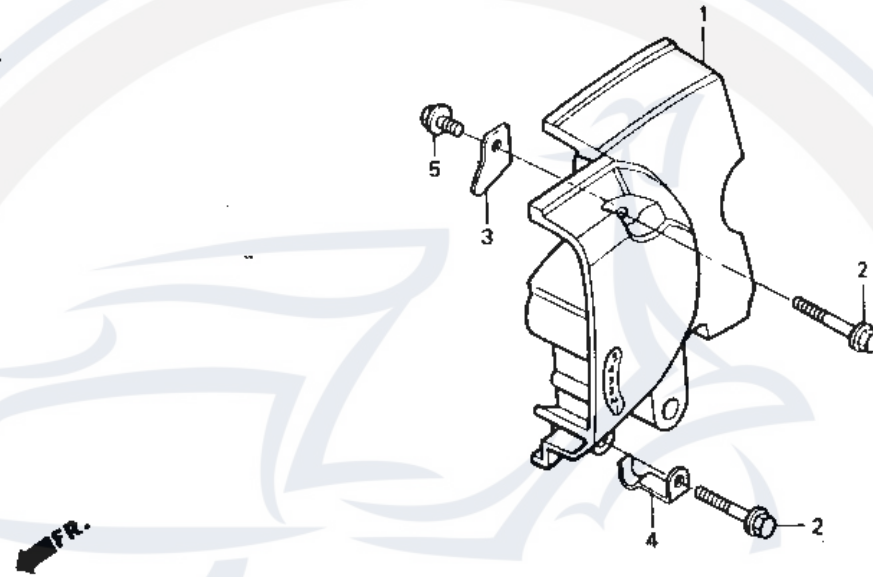
磁电机
Generator



序号 No.	代号 Part No.	名称	Description	每台件数 Repd.
1	244FM. 10. 05	触发线圈	GENERATOR ASSY., PULSE	1
2	244FM. 10. 02	磁电机飞轮	FLYWHEEL COMP., (ND)	1
3	244FM. 10. 01	磁电机定子	STATOR COMP., (ND)	1
4	244FM. 03. 01-02	线卡(一)	CLAMPER, CORD	1
5	244FM. 03. 01-05	线卡(二)	CLAMPER, CORD	1
6	244FM. 03. 07. 06-03	绝缘固定套	GRÖMMET B	1
7	GB70	螺钉 M5×10	BOLT, SOCKET, 5×10	2
8	244FM. 04-07	螺栓	BOLT, ROTOR SETTING	1
9	GB9074.1	螺钉组合件 M5×28	SCREW - WASHER, 5×28	3
10	GB70	螺钉 M6×20	BOLT, SOCKET, 6×20	3
11	244FM. 10. 04	电子点火器	C. D. I. UNIT	2
12	244FM. 02. 01	点火线圈绕组	COIL COMP., IGNITION	2
13	ZNTW 型	阻尼接线帽	CAP ASSY., NOISE SUPPRESSOR	2

链罩

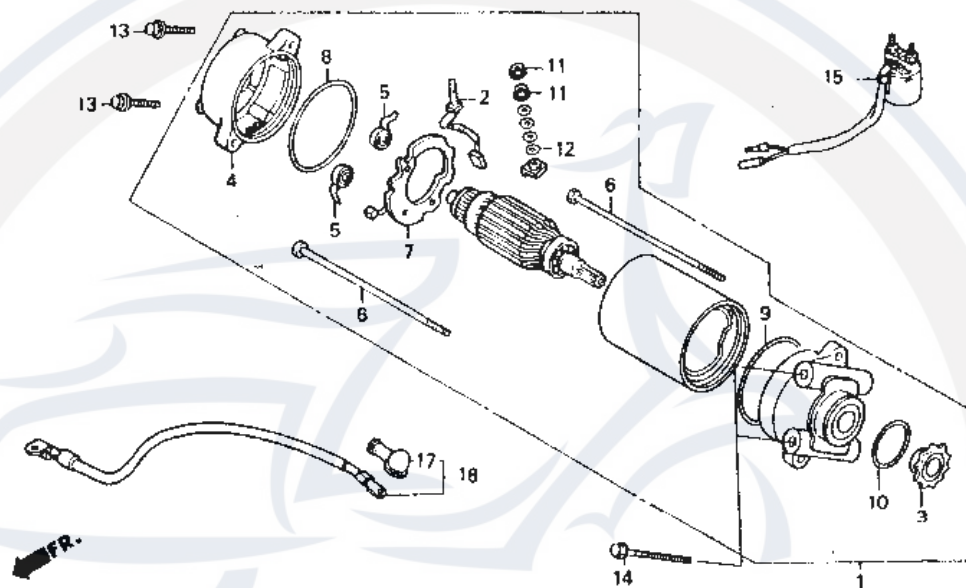
Left rear crankcase cover



序号 No.	代号 Part No.	名称	Description	每台件数 Repd.
1	244FM. 03. 02 -01	链罩	COVER, L. RR. CRANKCASE	1
2	244FM. 03. 06 -02	螺栓	BOLT, FLANGE, 6×40	2
3	244FM. 03. 02 -02	挡片	GUIDE, DRIVE CHAIN	1
4	244FM. 03. 07 -09	固定卡片	CLIP, STARTER MOTOR CABLE	1
5	GB6563	螺栓 M6×12	BOLT, FLANGE, 6×12	1

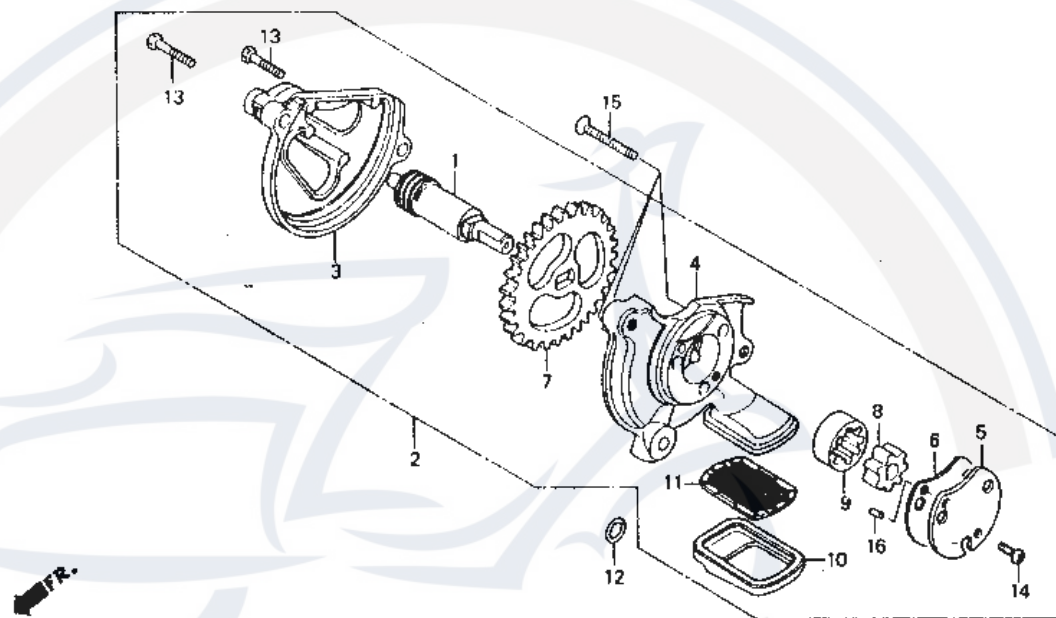
起动机

Starting motor



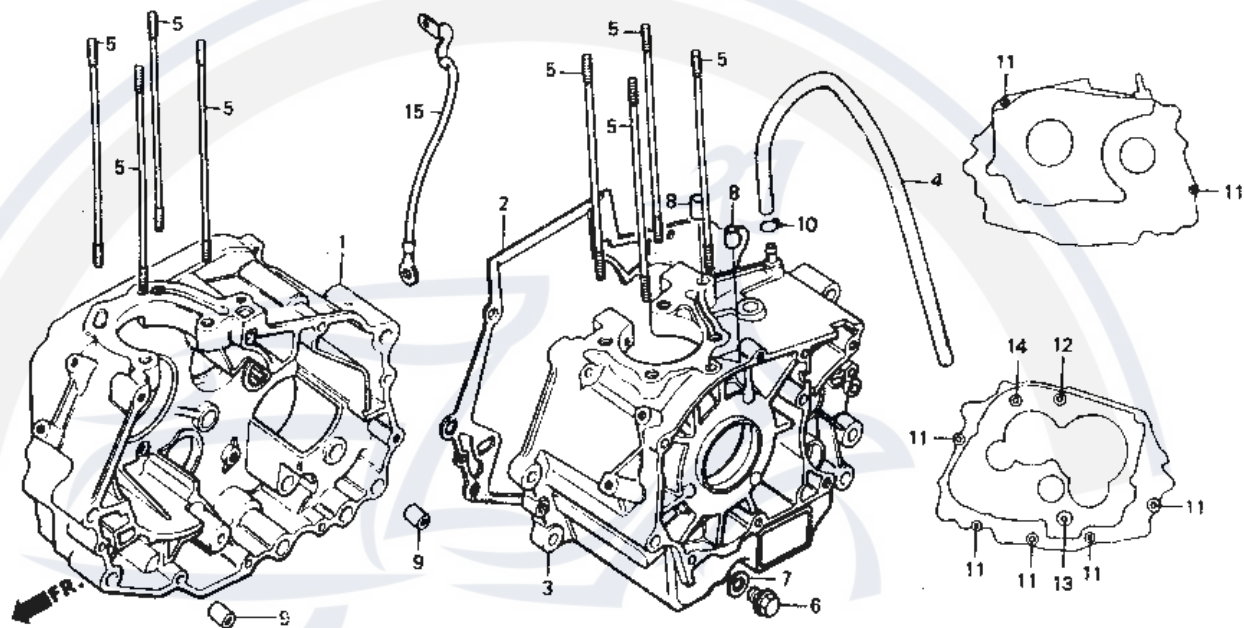
序号 No.	代号 Part No.	名称	Description	每台件数 Repd.
1	244FM. 11	起动机	MOTOR ASSY., STARTING	1
2	244FM. 11.06.01	电刷	BRUSH SET, TERMINAL	1
3	244FM. 11-07	起动机链轮	SPROCKET, STARTING MOTOR	1
4	244FM. 11.05	刷盖	BRACKET B. END	1
5	244FM. 11.06-05	刷盖	SPRING, CARBON BRUSH	2
6	244FM. 11-01	连接螺栓	BOLT, SETTING	2
7	244FM. 11.06	刷架	HOLDER SET, BRUSH	1
8	244FM. 11-05	密封圈	RING	1
9	244FM. 11-06	密封圈	RING, SEAL	1
10	GB3452.1	O形圈30×1.8	O-RING, 30×1.8	1
11	244FM. 11.04	螺母组件	NUT-WASHER, 6MM	2
12	244FM. 11-02	垫圈	WASHER	4
13	244FM. 03.06-03	螺栓	BOLT, FLANGE, 6×25	2
14	244FM. 03.07-07	螺栓(3)	BOLT, FLANGE, 6×65	2
15	244FM. 11.01	电磁开关组件	SWITCH ASSY., STARTER MAGNETIC	1
16	244FM. 11.02	线束	CABLE, STARTER MOTOR	1
17	244FM. 11.02-01	护套	COVER, STARTER MOTOR TERMINAL	1

机油泵
Oil pump



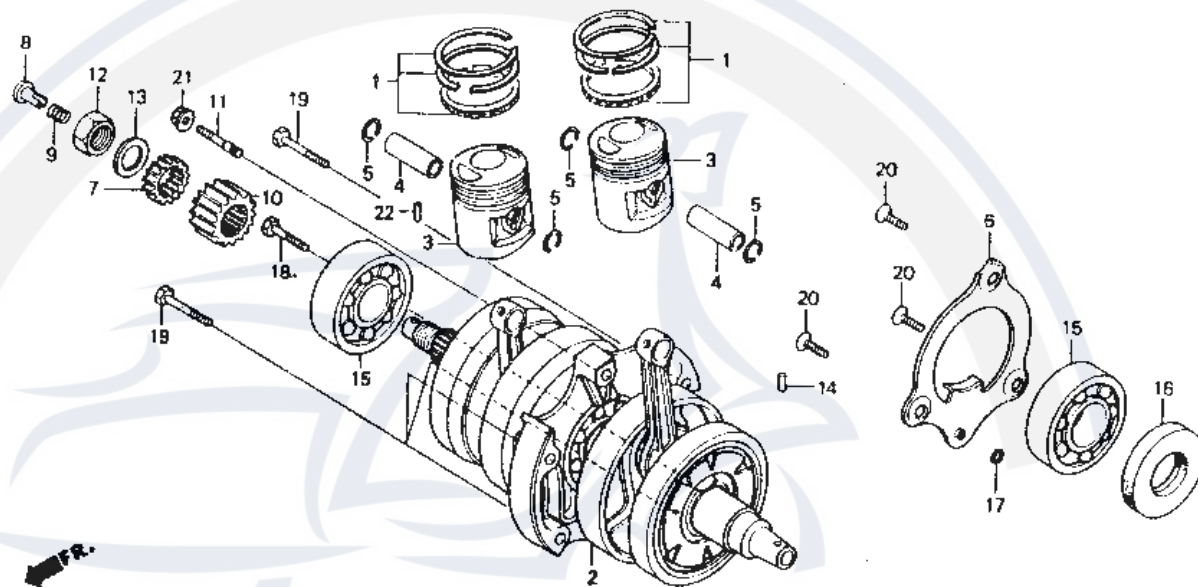
序号 No.	代号 Part No.	名称	Description	每台件数 Repd.
1	244FM.06-02	油泵轴	GEAR, TACHOMETER PINION(2T)	1
2	244FM.06	机油泵	PUMP ASSY., OIL	1
3	244FM.06-01	机油泵盖	COVER, OIL PUMP GEAR	1
4	244FM.06.02	机油泵体	BODY COMP., OIL PUMP	1
5	244FM.06-09	油泵盖板	PLATE, OIL PUMP	1
6	244FM.06-08	垫片	GASKET, OIL PUMP	1
7	244FM.06-03	传动齿轮	GEAR A, OIL PUMP DRIVE(42T)	1
8	244FM.06-07	机油泵内转子	ROTOR, OIL PUMP INNER	1
9	244FM.06-06	机油泵外转子	ROTOR, OIL PUMP OUTER	1
10	244FM.06-05	橡胶滤网罩	HOLDER, SCREEN	1
11	244FM.06.01	机油过滤网	SCREEN, OIL FILTER	1
12	244FM.03.07 14	O形圈	O-RING, 6×3	1
13	GB5783	螺栓 M5×20	BOLT, HEX., 5×20	2
14	GB818	螺钉 M5×10	SCREW, PAN, 5×10	1
15	244FM.06-10	十字槽沉头螺钉 M6×32	SCREW, FLAT, 6×32	3
16	244FM.06.02 02	定位销	PIN C, DOWEL, 4×5	1

曲轴箱
Crankcase



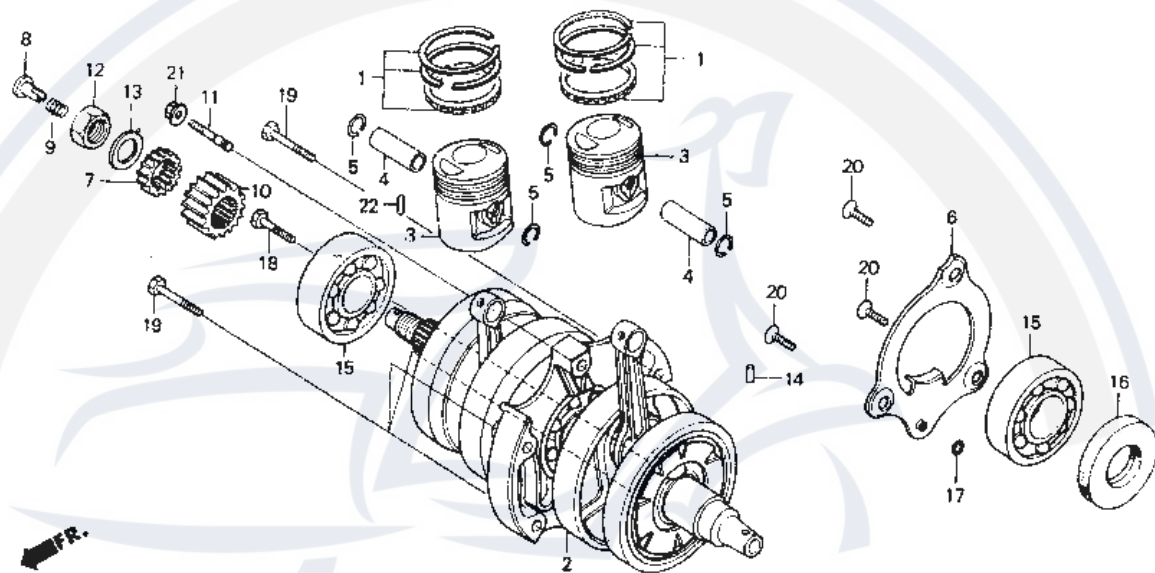
序号 No.	代号 Part No.	名称	Description	每台件数 Repd.
1	244FM.03.06.01	右曲轴箱	CRANKCASE COMP., R	1
2	244FM.03-11	曲轴箱垫片	GASKET, CRANKCASE	1
3	244FM.03.07.02	左曲轴箱	CRANKCASE COMP., L	1
4	244FM.03.07-01	通气管	TUBE, BREATHER	1
5	244FM.03-04	缸头螺栓	BOLT, CYLINDER STUD	8
6	244FM.03.07-11	螺栓(2)	BOLT, DRAIN PLUG, 12MM	1
7	244FM.03.07-10	垫片	WASHER, DRAIN PLUG, 12MM	1
8	244FM.03-09	定位销	PIN, DOWEL, 8×14	2
9	244FM.03-13	曲轴箱定位销	PIN, DOWEL, 12×20	2
10	244FM.03.07-02	弹性卡簧	CLIP, TUBE	1
11	244FM.03.06-02	螺栓(1)	BOLT, FLANGE, 6×40	7
12	244FM.03.07-07	螺栓(3)	BOLT, FLANGE, 6×65	1
13	244FM.03.07-05	螺栓	BOLT, FLANGE, 6×65	1
14	GB5787	螺栓 M6×40	BOLT, FLANGE, 6×40	1
15	244FM.03.07.08	起动接地导线	CABLE, BATTERY EARTH	1

曲轴、连杆、活塞
Crankshaft, Piston



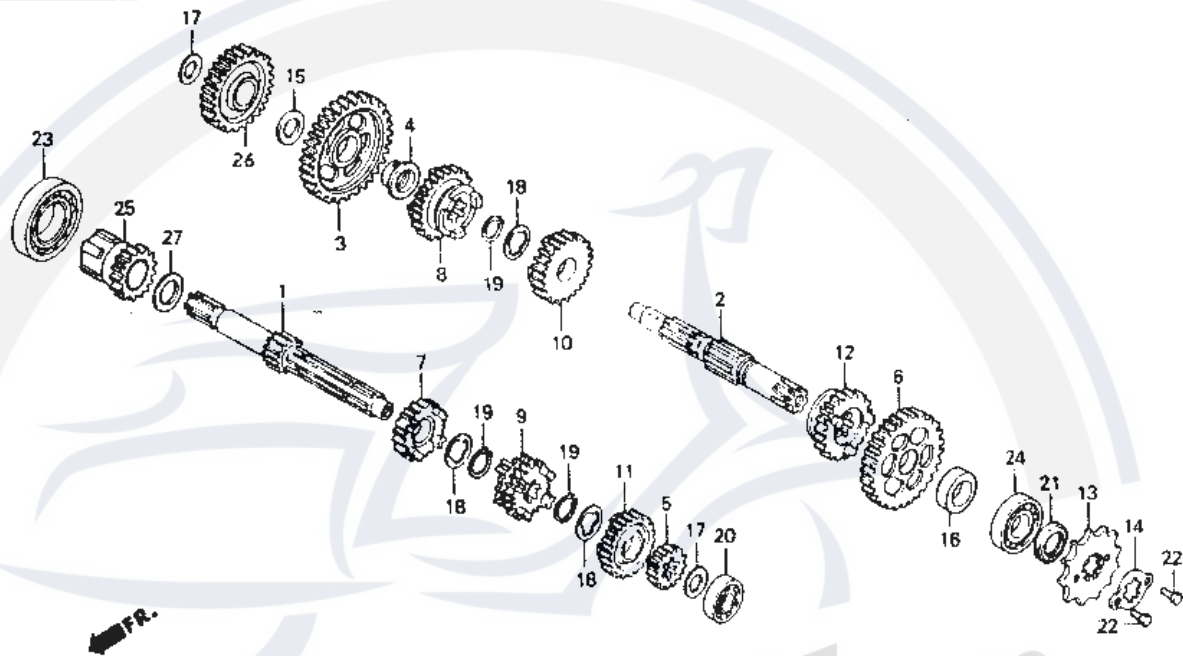
序号 No.	代号 Part No.	名称	Description	每台件数 Repd.
1	244FM. 04. 01. 01-02	油环衬环	RING SET, PISTON(STD.)	2
	244FM. 04. 01. 01-01	油环刮片环	RING SET, PISTON(0.50)	4
	244FM. 04. 01-03	第二道气环	RING SET, PISTON(1.00)	2
	244FM. 04. 01-02	第一道气环	RING SET, PISTON(1.00)	2
2	244FM. 04. 02	曲轴、连杆	CRANKSHAFT COMP	1
3	244FM. 04. 01-01	活塞	PISTON	2
4	244FM. 04. 01-05	活塞销	PIN, PISTON	2
5	244FM. 04. 01-04	活塞销档圈	CLIP, PISTON PIN	4
6	244FM. 03. 07. 04	输油盘	PLATE, OIL THROUGH	1
7	244FM. 04-06	油泵传动小齿轮	GEAR B, OIL PUMP DRIVE(19T)	1
8	244FM. 04-04	阀体	THROUGH, OIL	1
9	244FM. 04-03	回位弹簧	SPRING, OIL THROUGH	1
10	244FM. 04-01	离合器传动小齿轮	GEAR, PRIMARY DRIVE(18T)	1
11	244FM. 03. 07-06	双头螺栓	BOLT, STUD, 7×32	1
12	244FM. 04-02	螺母	NUT, HUB, 16MM	1
13	244FM. 04-05	垫圈	WASHER, LOCK	1

曲轴、连杆、活塞
Crankshaft, Piston



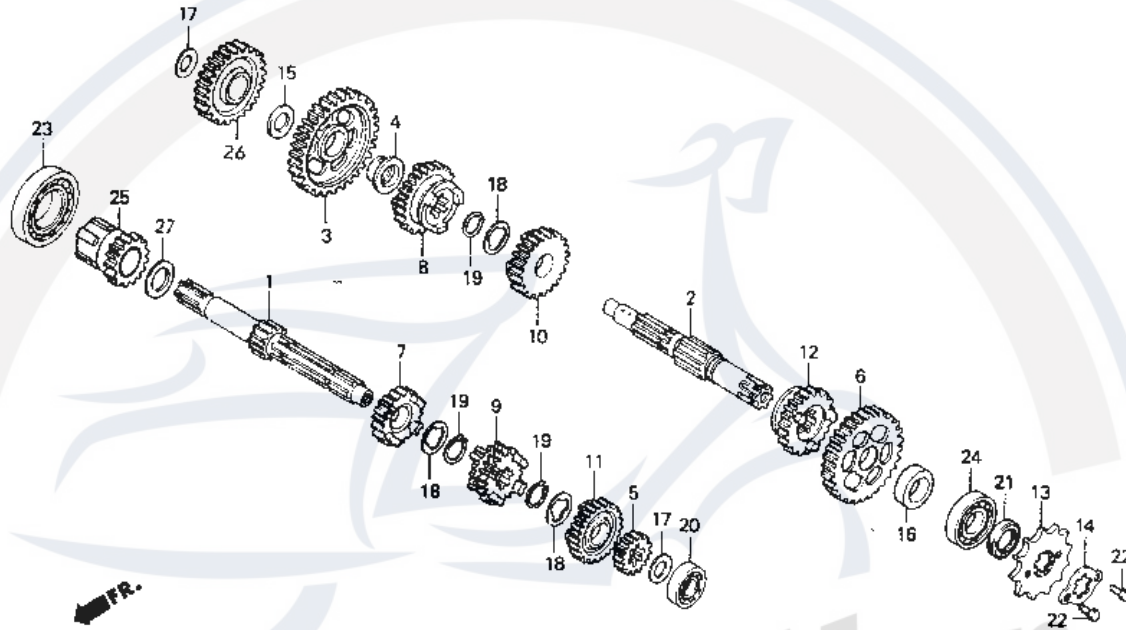
序号 No.	代号 Part No.	名称	Description	每台件数 Repd.
14	244FM. 04. 02 - 01	左缸左曲柄轴定位销	PIN, DOWEL, 4×4.4	1
15	GB276	轴承6305	BZARING, RADIAL BALL, 6305	2
16	244FM. 03. 07. 05	油封	OIL SEAL, 35×52×7	1
17	244FM. 03. 07 - 14	O形圈	O-RING, 6×3	1
18	GB5782	螺栓 M6×28	BOLT, HEX., 6×28	1
19	GB5782	螺栓 M6×32	BOLT, HEX., 6×32	4
20	GB819	螺钉 M6×16	SCREW, FLAT, 6×16	3
21	GB6177	螺母 M6	NUT, FLANGE, 6MM	1
22	GB309	滚针 2×13.8	ROLLER, 2×13.8	1

变速器
Transmission



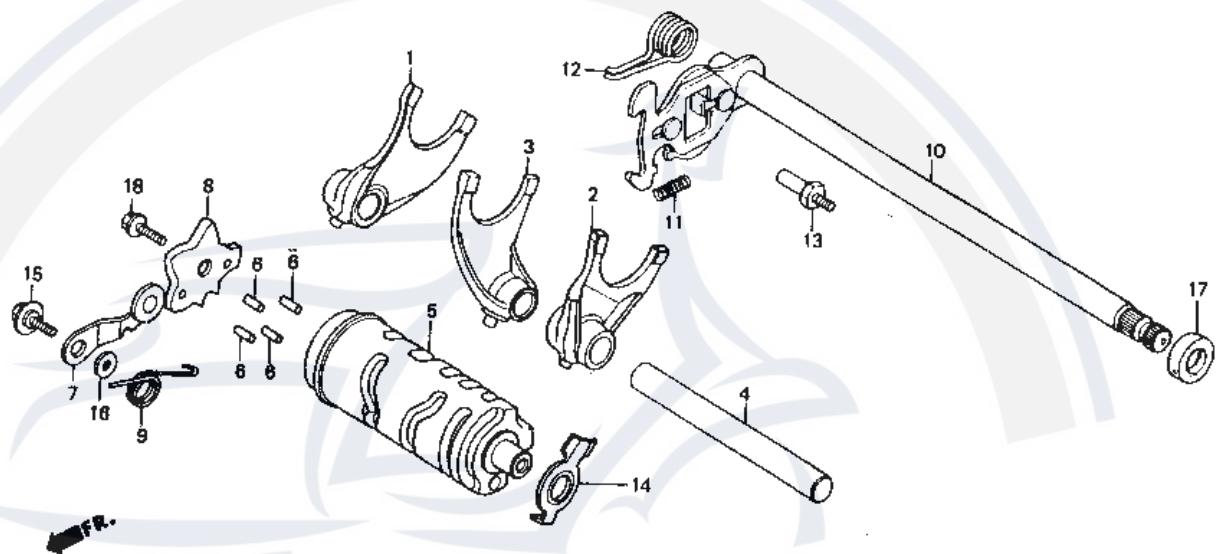
序号 No.	代号 Part No.	名称	Description	每台件数 Repd.
1	244FM. 08-08	主轴	MAINSHAFT COMP. (13T)	1
2	244FM. 08-09	付轴	COUNTERSHAFT, TRANSMISSION	1
3	244FM. 08-12	付轴一档齿轮	GEAR, COUNTERSHAFT LOW (36T)	1
4	244FM. 08-13	付轴一档齿轮套	BUSH. 16, 5MM	1
5	244FM. 08-02	主轴二档齿轮	GEAR, MAINSHAFT SECOND (17T)	1
6	244FM. 08-17	付轴二档齿轮	GEAR, COUNTERSHAFT SECOND (32T)	1
7	244FM. 08-06	主轴三档齿轮	GEAR, MAINSHAFT THIRD (20T)	1
8	244FM. 08-14	付轴三档齿轮	GEAR, COUNTERSHAFT THIRD (29T)	1
9	244FM. 08-05	主轴四档齿轮	GEAR, MAINSHAFT FOURTH (23T)	1
10	244FM. 08-15	付轴四档齿轮	GEAR, COUNTERSHAFT FOURTH (28T)	1
11	244FM. 08-03	主轴五档齿轮	GEAR, MAINSHAFT FIFTH (24T)	1
12	244FM. 08-16	付轴五档齿轮	GEAR, COUNTERSHAFT FIFTH (26T)	1
13	244FM. 08-02	输出链轮	SPROCKET, DRIVE (15T)	1
14	244FM. 08-19	锁片	PLATE A2, FIXING	1
15	244FM. 08-11	挡圈	WASHER, TRUST	1
16	244FM. 08-18	挡圈	COLLAR, 20MM	1

变速器
Transmission



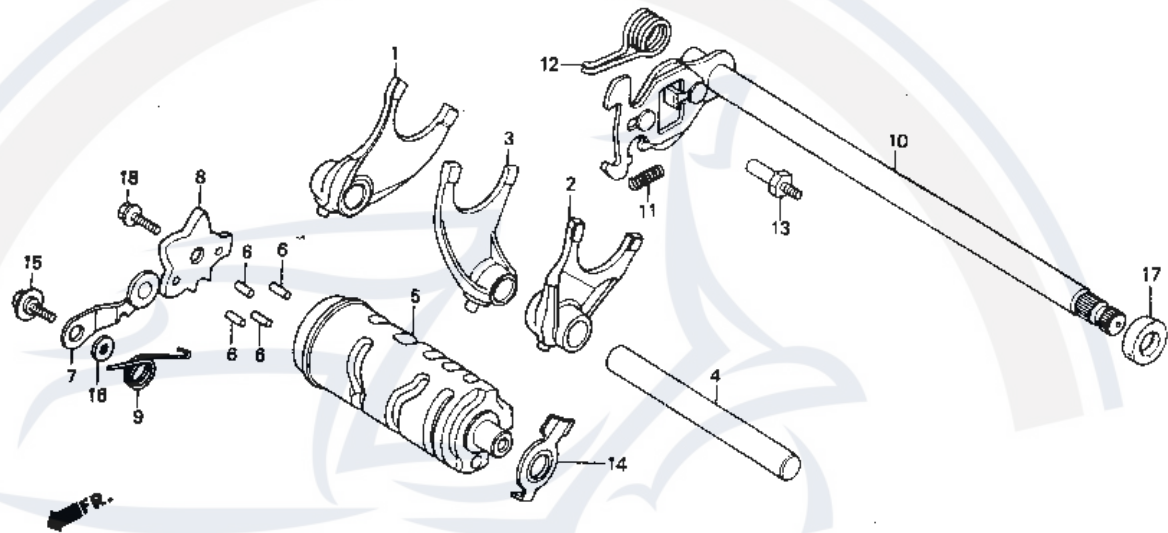
序号 No.	代号 Part No.	名称	Description	每台件数 Repd.
17	244FM.08-01	挡圈	WASHER, THRUST, 15MM	1
18	244FM.08-04	挡圈	WASHER A, SPLINE, 20MM	3
19	QSTW-20	挡圈	SET RING, 20MM	3
20	GB278	滚动轴承6202	BEARING, RADIAL BALL, 6202	1
21	244FM.03.07.03	油封	OIL SEAL, 20×34×7	1
22	GB5783	螺栓 M6×10	BOLT, HEX., 6×10	2
23	GB276	轴承6006	BEARING, RADIAL BALL, 6006	1
24	GB278	滚动轴承6204	BEARING, RADIAL BALL, 6204	1
25	244FM.08.01	主动起动齿轮	GEAR, MAINSHAFT, STARTING	1
26	244FM.08-10	付起动齿轮	GEAR, COUNTERSHAFT, STARTING	1
27	244FM.08-07	挡圈	WASHER, TRUST	1

换档拨叉
换档齿轮毂
Gearshift fork
Gearshift drum



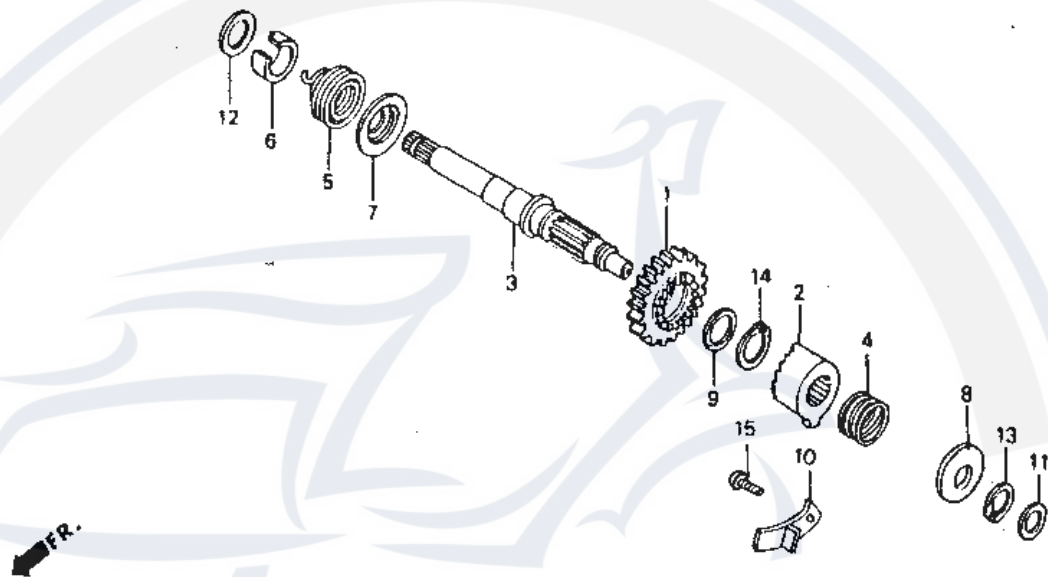
序号 No.	代号 Part No.	名称	Description	每台件数 Repd.
1	244FM. 12-06	变速付轴右拨叉	FORK, R. GEARSHIFT	1
2	244FM. 12-04	变速付轴左拨叉	FORK, L. GEARSHIFT	1
3	244FM. 12-05	变速主轴拨叉	FORK, CENTER GEARSHIFT	1
4	244FM. 12-03	拨叉轴	SHAFT, GEARSHIFT FORK GUIDE	1
5	244FM. 12-12	换档齿轮毂	DRUM, GEARSHIFT	1
6	244FM. 12-11	变速凸轮端销	PIN, GEARSHIFT DRUM	4
7	244FM. 12.01	换档齿轮毂止动器	STOPPER COMP., GEARSHIFT DRUM	1
8	244FM. 12-02	换档齿轮凸轮	PLATE, EARSHIFT DRUM STOPPER	1
9	244FM. 12-10	止动器扭簧	SPRING, SHIFT DRUM STOPPER	1
10	244FM. 12.03	换档轴	SPINDLE COMP., GEARSHIFT	1
11	244FM. 12.03-02	换档轴弹簧	SPRING, GEARSHIFT ARM	1
12	244FM. 12-01	扭簧	SPRING, GEARSHIFT RETURN	1
13	244FM. 03.06-01	销子	PIN, SHIFT RETURN SPRING	1
14	244FM. 12-07	空档指示片	ROTOR, NEUTRAL SWITCH	1
15	244FM. 12-08	螺栓	BOLT, GEARSHIFT DRUM STOPPER ARM PIVOT	1
16	244FM. 12-09	垫片	WASHER, DRUM STOPPER	1

换档拨叉
 换档齿轮毂
 Gearshift fork
 Gearshift drum



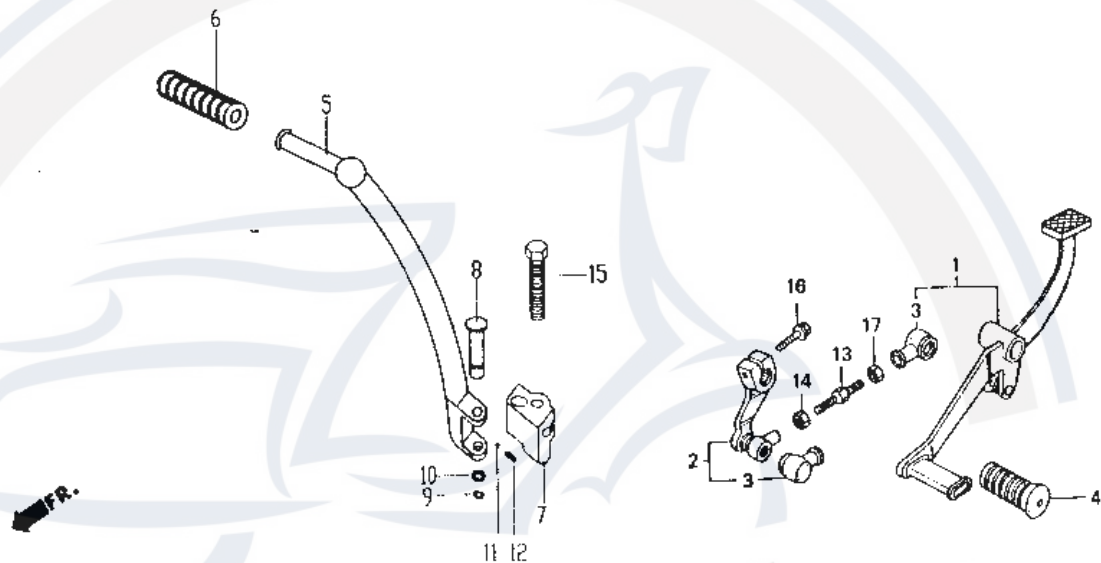
序号 No.	代号 Part No.	名称	Description	每台件数 Repd.
17	244FM.03.07.01	油封	OIL SEAL, 12×24×10	1
18	GB5787	螺栓 M6×20	BOLT, FLANGE, 6×20	1

起动轴组件
Kick shaft assy



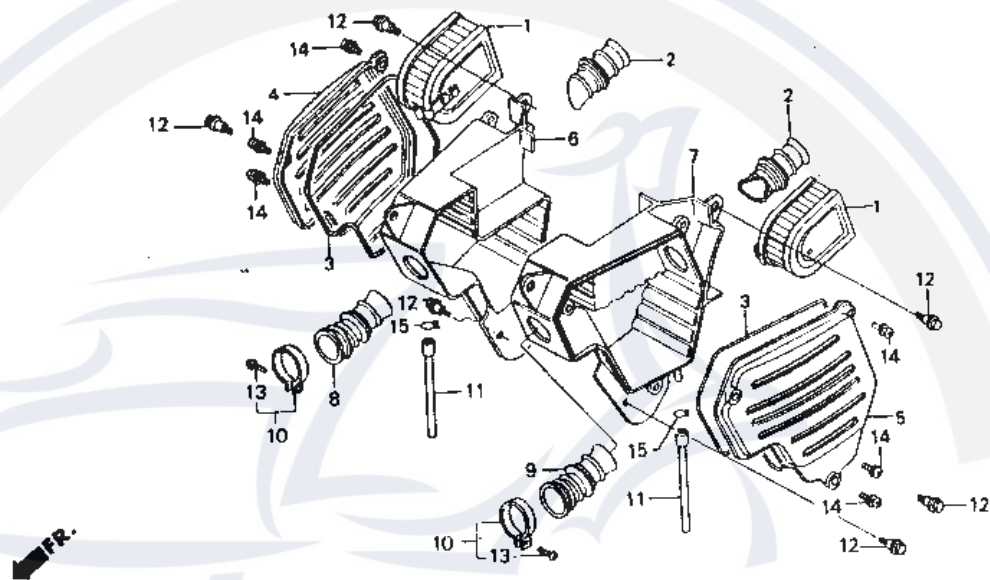
序号 No.	代号 Part No.	名称	Description	每台件数 Repd.
1	244FM.09-07	起动齿轮	KICK GEAR	1
2	244FM.09-05	起动棘爪	KICK PAWL	1
3	244FM.09-11	起动轴	KICK SHAFT	1
4	244FM.09-03	弹簧	SPRING	1
5	244FM.09-09	起动回位弹簧	KICK SPRING	1
6	244FM.09-10	弹簧固定套	HOLD SLEEVE, SPRING	1
7	244FM.09-08	弹簧底板	RETAINER, SPRING	1
8	244FM.09-02	弹簧托盘	TRAY, SPRING	1
9	244FM.09-06	垫圈	WASHER	1
10	244FM.09-04	起动棘爪分离片	SEPARATING PLATE, KICK PAWL	1
11	244FM.09-01	垫圈	WASHER	1
12	244FM.09-12	垫圈	WASHER	1
13	GB894.1	挡圈16	SET RING 16mm	1
14	QSFW-20	挡圈20	SET RING 20mm	1
15	GB818	螺钉 M6×16	SCREW, PAN, M6×16	1

换挡脚踏杆
 起动杆
 Gearshift pedal
 Kick lever with pedal



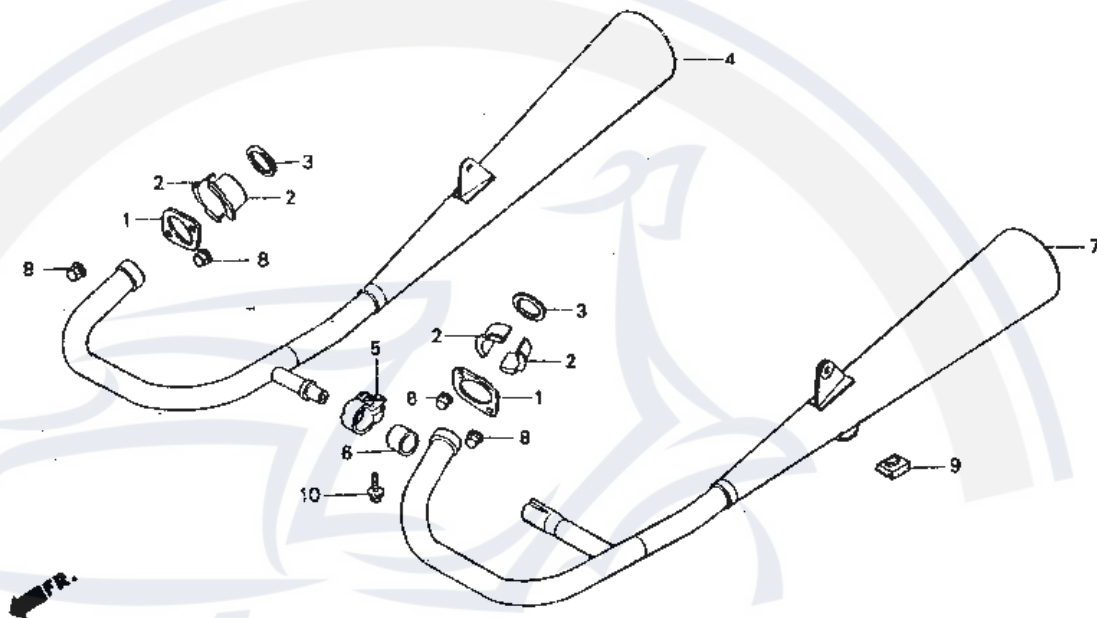
序号 No.	代号 Part No.	名称	Description	每台件数 Repd.
1	244FM. 12. 02. 02	换挡脚踏杆	GEARSHIFT PEDAL	1
2	244FM. 12. 02. 01	摇臂接头	JOINT ROCKER	1
3	244FM. 12. 02. 01-02	铰链橡胶套	RUBBER SLEEVE, HINGE	1
4	244FM. 12. 02. 02-03	换挡脚踏杆脚踏套	RUBBER SLEEVE, GEARSHIFT PEDAL	1
5	244FM. 09. 01-04	起动杆	KICK LEVER WITH PEDAL	1
6	244FM. 09. 01-05	起动杆胶套	RUBBER SLEEVE, KICK LEVER WITH PEDAL	1
7	244FM. 09. 01-03	起动杆毂	HUB, KICK LEVER WITH PEDAL	1
8	244FM. 09. 01-01	杆销	PIN, KICK LEVER WITH PEDAL	1
9	GB896	挡圈6	SET RING, 6mm	1
10	GB97. 2	垫圈8	WASHER, 8mm	1
11	244FM. 09. 01-02	弹簧	SPRING	1
12	GB308	钢球φ6	STEEL BALL, φ6	1
13	244FM. 12. 02-02	双头螺栓	BOLT, STUD	1
14	244FM. 12. 02-01	螺母	NUT, M6	1
15	GB5782	螺栓 M8×25	BOLT, M8×25	1
16	GB5786	螺栓 M6×20	BOLT, M6×20	1
17	GB6172	螺母 M6	NUT, M6	1

空滤器
Air cleaner



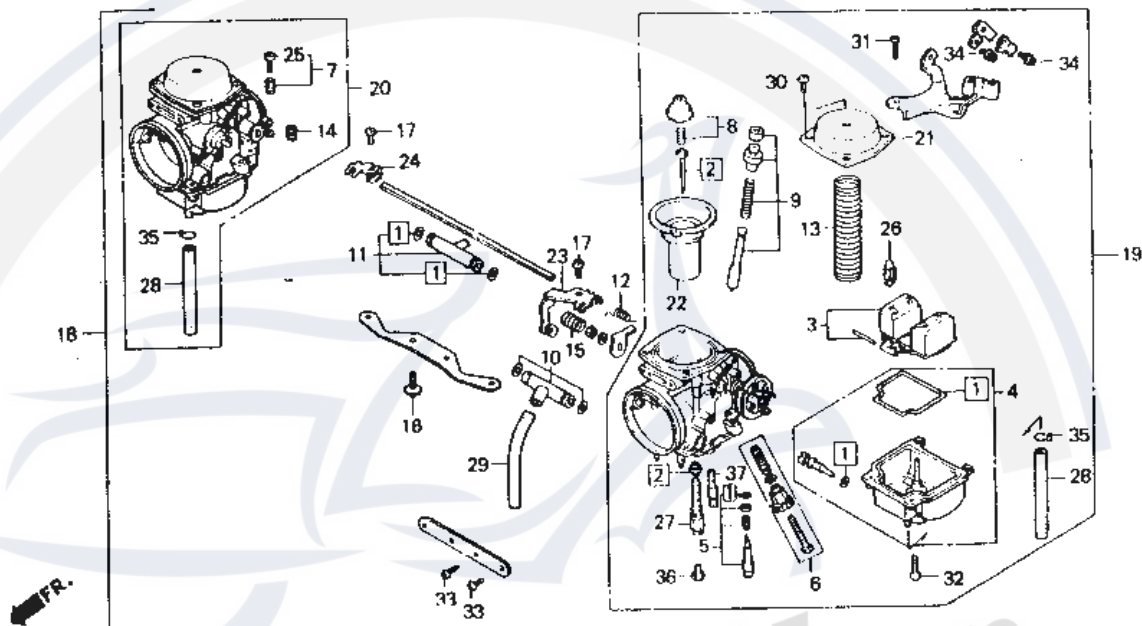
序号 No.	代号 Part No.	名称	Description	每台件数 Repd.
1	244FM. 15. 01. 03	空滤器滤芯	ELEMENT. AIR CLEANER	2
2	244FM. 15. 01. 02	进气软管	DUCT, AIR CLEANER CASE	2
3		密封圈	SEAL. AIR CLEANER COVER	2
4	244FM. 15. 01-06	右空滤器盖	COVER, R. AIR CLEANER	1
5	244FM. 15. 02-01	左空滤器盖	COVER, L. AIR CLEANER	1
6	244FM. 15. 01. 04	右空滤器壳体	CASE, R. AIR CLEANER	1
7	244FM. 15. 02. 01	左空滤器壳体	CASE, L. AIR CLWANER	1
8	244FM. 15. 01-06	右出气胶管	TUBE. R. AIR CLEANER CONNECTING	1
9	244FM. 15. 02. 01	左出气胶管	TUBE, L. AIR CLEANER CONNECTING	1
10	244FM. 15. 01-05	卡箍	BAND. AIR CLEANER CONNECTING TUBE	2
11	244FM. 15. 01-01	通气管护套	TUBE ASSY., DRAIN	2
12		螺钉 M6	BOLT, FLANGE, 6MM	6
13	GB823	螺钉 M4×20	SCREW, PAN, 4×20	2
14	GB9074. 5	螺钉组合件 M6×25	SCREW--WASHER, 6×25	6
15	144FM. 15. 01-04	卡簧	CLIP. TUBE(B12. 5)	2

消声器部件
Exhaust muffler



序号 No.	代号 Part No.	名称	Description	每台件数 Repd.
1	244FM. 01-04	消声器法兰	JOINT, EX. PIPE	2
2	244FM. 01-03	排气管卡片	COLLAR, EW. PIPE JOINT	4
3	244FM. 01-09	排气口衬垫	GASKET A, EX. PIPE	2
4	244FM. 13. 02	右消声器	MUFFLER COMP., R. EX	1
5	244FM. 13. 01. 05	卡箍	BAND, EX. PIPE	1
6		石墨密封填料	PACKING, MUFFLER	1
7	244FM. 13. 01	左消声器	MUFFLER COMP., L. EX	1
8	244FM. 01. 01-09	盖形螺母	NUT, CAP, 6MM	4
9	244FM. 13. 01-02	缓冲块	RUBBER A, STAND STOPPER	1
10	GB5787	螺栓 M8×20	BOLT, FLANGE, 8×20	1

化油器
Carburetor



序号 No.	代号 Part No.	名称	Description	每台件数 Repd.
1	244FM. 14. 07-01	密封圈(2)	GASKET SET	2
	244FM. 14. 08-03	密封圈	GASKET SET	2
	244FM. 14. 08-05	密封圈	GASKET SET	2
2	244FM. 14. 06-12	主喷管	MAIN NOZZLE	2
	244FM. 14. 02. 02	主油针	NEEDLE SET, JET	2
3	244FM. 14. 05	化油器浮子	FLOAT SET	2
4	244FM. 14. 08	浮子室	CHAMBER SET, FLOAT	2
5	244FM. 14. 06. 02	怠速调节螺钉	SCREW SET A	2
6	244FM. 14-15	怠速限位螺钉旋扭	SWITCH, SCREW SET B	1
	244FM. 14-16	怠速限位螺钉	SCREW SET B	1
	244FM. 14-17	怠速限位螺钉弹簧	SPRING, SCREW SET B	1
	GB97. 1	垫圈8	WASHER, 8mm	1
7	GB818	螺钉M4×12	SCREW SET C	1
	244FM. 14-05	节气门调节螺钉弹簧1	SPRING	1
8	244FM. 14. 02-01	锁紧头	PLATE SET, VALVE	2
	244FM. 14. 02-02	油针压紧弹簧	SPRING	2

序号 No.	代号 Part No.	名称	Description	每台件数 Repd.
9	244FM. 14. 06. 01	加速柱塞	VALVE SET, STARTER	2
10	244FM. 14. 01	三通组件	JOINT SET D, TUBE	1
11	244FM. 14. 07	接管	JOINT SET, FUEL	1
12	244FM. 14-03	扭圈2	SPRING, TORSION COIL	1
13	244FM. 14-07	针阀弹簧	SPRING, VACUUM PISTON	2
14	244FM. 14-06	节气门调节螺钉弹簧2	SPRING	1
15	244FM. 14-04	弹簧1	SPRING	1
16	GB818	螺钉 M6×12	SCREW, PAN, 6×12	4
17	GB818	螺钉 M4×7	SCREW, PAN, 4×7	2
18	244FM. 14	化油器	CARBURETOR ASSY. (VE26B P)	1
19	244FM. 14	右缸化油器	CARBURETOR ASSY., R	1
20	244FM. 14	左缸化油器	CARBURETOR ASSY., L	1
21	244FM. 14. 03	底壳	TOP COMP	2
22	244FM. 14. 02. 01	柱塞	PISTON COMP., VACUUM	2
23	244FM. 14-01	加速柱塞摇臂	LEVER, STARTER	1
24	244FM. 14-08	加速柱塞摇臂	LEVER, STARTER	1
25	244FM. 14-05	节气门调节螺钉弹簧1	SCREW, STOPPER	1
26	244FM. 14. 04	化油器针阀	VALVE COMP. FLOAT	2
27	244FM. 14. 06-12	主喷管	HOLDER, NEEDLE JET	2
28	244FM. 14-12	溢流管	TUBE	2
29	244FM. 14-14	通气管	TUBE, AIR VENT	1
30	GB818	螺钉 M4×8	SCREW, PAN, 4×8	6
31	GB818	螺钉 M4×10	SCREW, PAN, 4×10	2
32	GB818	螺钉 M4×14	SCREW, PAN, 4×14	8
33	GB818	螺钉 M5×10	SCREW, PAN, 5×10	4
34	GB9074. 3	螺钉组合件 M4×10	SCREW-WASHER, 4×10	2
35	244FM. 14-11	管箍	CLIP, TUBE(B8)	2
36	244FM. 14. 06-11	主量孔	JET, MAIN, #88	2
37	244FM. 14. 06. 03	怠速泡沫管	JET COMP	2